



ICAO BANGKOK

UNITING AVIATION

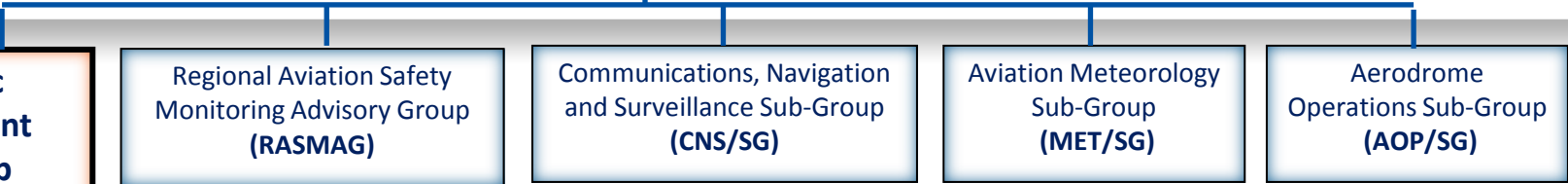
Update: Asia/Pacific Region Air Traffic Flow Management Steering Group (ATFM/SG)

Shane Sumner
Regional Officer ATM/AIM
ICAO Asia and Pacific Regional Office
ssumner@icao.int





APANPIRG



Air Traffic Management Sub-Group (ATM/SG)

Regional Aviation Safety Monitoring Advisory Group (RASMAG)

Communications, Navigation and Surveillance Sub-Group (CNS/SG)

Aviation Meteorology Sub-Group (MET/SG)

Aerodrome Operations Sub-Group (AOP/SG)

Air Traffic Flow Management Steering Group ATFM/SG

AIS/AIM Implementation Task Force
AAITF

Regional ATM Contingency Plan Task Force
RACP/TF

Asia/Pacific Search and Rescue Task Force
APSAR/TF

South Asia/Indian Ocean ATS Coordination Group
SAIOCG

South East Asia ATM Coordination Group
SEACG



ATFM/SG

- Meeting Reports available on ICAO Asia/Pacific Regional Office website:
- <http://www.icao.int/APAC/Meetings/Pages/default.aspx>



ATFM/SG

- **Asia/Pacific Regional Air Traffic Flow Management Concept of Operations**



**ASIA/PACIFIC REGIONAL
AIR TRAFFIC FLOW MANAGEMENT
CONCEPT OF OPERATIONS**

Version 1.0 September 2015

This document was developed by the Asia/Pacific Air Traffic Flow Management Steering Group (ATFM/SG)

Approved by APANPIRG/26 and published by the
ICAO Asia and Pacific Office, Bangkok



ATFM/SG

- **Asia/Pacific Regional Air Traffic Flow Management Concept of Operations:**
- <http://www.icao.int/APAC/Documents/edocs/Regional%20ATFM%20Concept%20of%20Operations.pdf>
 - Initially developed by Singapore together with research and industry partners
 - Further developed by expanded group inc. Hong Kong China, Malaysia, Thailand
 - Adapted by ATFM/SG for Regional application
 - Basis for development of Regional Framework for Collaborative ATFM
 - Adopted by APANPIRG/26 (September 2015)



ATFM/SG

- **Asia/Pacific Framework for Collaborative ATFM**



**ASIA/PACIFIC FRAMEWORK
FOR
COLLABORATIVE AIR TRAFFIC FLOW MANAGEMENT**

Version 1.0 September, 2015

This Plan was developed by the Asia/Pacific Air Traffic Flow Management Steering Group (ATFM/SG)

Approved by APANPIRG/26 and published by the
ICAO Asia and Pacific Office, Bangkok



ATFM/SG

- **Asia/Pacific Framework for Collaborative ATFM**
- <http://www.icao.int/APAC/Documents/edocs/Asia%20Pacific%20Framework%20for%20Collaborative%20ATFM.pdf>



ATFM/SG

- **Asia/Pacific Framework for Collaborative ATFM**
 - Common Regional framework addressing ATFM implementation and operational issues
 - Cross-border, network-based ATFM
 - Distributed multi-nodal ATFM network
 - Not a centralized ATFM facility
 - Subject to expansion and adjustment
 - As the Concept matures and experienced is gained
 - Adopted by APANPIRG/26 September 2015



Framework for Collaborative ATFM

- **MET Information**

- Includes the concept of meteorological forecasting information tailored for ATFM purposes
- References ASBU B0-AMET *Meteorological Information Supporting Enhanced Operational Efficiency and Safety*
- Expands upon Seamless ATM Plan requirements



Framework for Collaborative ATFM

- **MET Information**

- Provides background information on MET information supporting ATFM
- Current examples primarily from Hong Kong CAD/Hong Kong Observatory collaborative program



Framework for Collaborative ATFM

- **Performance Improvement Plan**
 - **(Performance Objectives)**
 - **Regional ATFM Capability**
 - Phase 1A applicable November 2015
 - Phase 1B applicable May 2017
 - Phase 2 applicable November 2018



Framework for Collaborative ATFM

- **Regional ATFM Capability Phase 1A**
 - **(November 2015)**
- 7.8 Daily pre-tactical airport and airspace capacity and demand analysis should be conducted for all ATFM Program Airports and associated terminal area airspace, and for all en-route ATC sectors supporting the busiest Asia/Pacific city pairs, including consideration of:
 - ii. forecast meteorological phenomena;



Framework for Collaborative ATFM

- **Regional ATFM Capability Phase 2**
 - **(November 2018)**
- 7.31 Meteorological services to support ATM in the terminal area (MSTA) should be implemented, including near-term or *now-casting* forecasts of convective weather activity at or affecting ATFM Program Airports and associated instrument approach procedures, terminal area ATS routes and holding points and other significant locations.
- *Note: Annex 3 requires that States ensure the quality management of meteorological information.*



ICAO BANGKOK

UNITING AVIATION



ICAO

North American
Central American
and Caribbean
(NACC) Office
Mexico City

South American
(SAM) Office
Lima

ICAO
Headquarters
Montréal

Western and
Central African
(WACAF) Office
Dakar

European and
North Atlantic
(EUR/NAT) Office
Paris

Middle East
(MID) Office
Cairo

Eastern and
Southern African
(ESAF) Office
Nairobi

Asia and Pacific
(APAC) Sub-office
Beijing

Asia and Pacific
(APAC) Office
Bangkok



THANK YOU